

Milford Borough
Music In The Park
2008

Milford Music in the Park is a free summer community music event presented each Sunday afternoon. The 2008 concert series will start July 6th and run through August 31st. The tall shade trees and expansive lawn at Memorial Park on Ann Street in Milford is the perfect setting to present these concerts.

This is the third year these concerts have taken place in Memorial Park. In previous years we were unable to offer a full summer long concert series, however, this year we are very excited about the positive response we are receiving and will be offering a full summer line up.

These concerts are a wonderful opportunity for families to meet friends in Milford for a Sunday afternoon of lively entertainment. Music lovers will enjoy a real treat each Sunday afternoon throughout the summer this year.

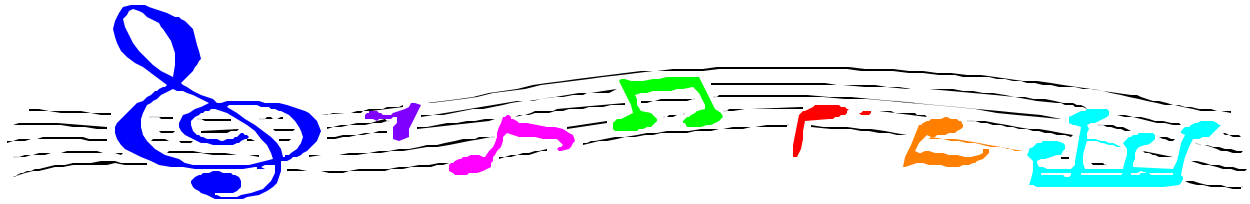
Our goal is to present quality music at our concerts. The region has a strong array of talented musicians, some who play regularly in our local pubs, and others who may not be as well known locally, but have developed strong followings outside the area.

To accomplish our goal, community support is needed. We are planning several fun fundraising events and have already started candy sales around town. We also need financial support from individuals and local businesses. As you will see on our Sponsor Sheet there are many different levels of sponsorship & support ranging from \$10 to \$500.

Thank you, your support for this exciting summer long concert series will help to make this year's concert series an exciting success.

Committee Members

John Brodersen	Carol Kellner
Deanne Connolly	Leslie Lacika
Shane Dittsworth	Steve Panicucci
Ernie Kara	Elena Quinn
Obi Kaye	Michael Zimmerman



Milford Borough's
Music In The Park
2008

Sponsorship Materials & Advertising

Poster - Posters will be distributed for display at various locations around town.

Program Ad - Over 8,000 **full color** programs will be sent to Milford residents as a pull out in the Pike Country Courier. An additional 2,000 programs will be distributed through area businesses and at the concerts.

Web Page Listing/Link - Name of business will be listed on the Music In The Park Website. (Logo link, Text link, Text listing) www.milfordmusic.net/musicinthepark

Announcements - Headliner sponsors will be verbally acknowledged during the performances.

Complimentary Tickets - Ticket will be provided to the various fundraising events (Songwriters Showcase, Cocktail Reception & Silent Auction, others if any.)

SPONSORSHIP LEVELS:

*** HEADLINER - \$500**

- Logo on Poster
- Display Ad in Program
- Web Page Logo Link
- Acknowledgement on Stage
- Tickets to Fundraising Events

*** FRONT ROW - \$200**

- Display Ad in Program
 - *2 business card block
- Web Page Text Listing

*** MUSIC FAN - \$100**

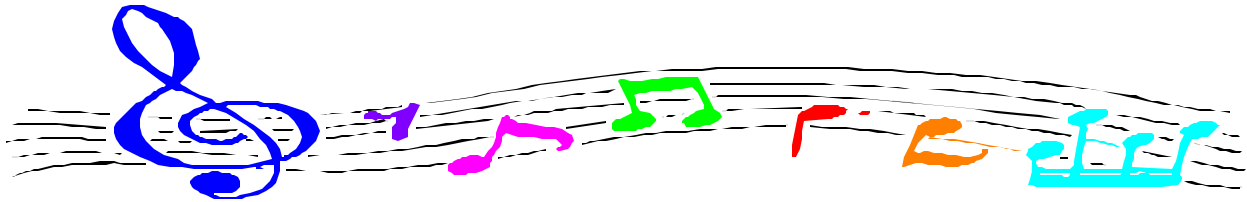
- Single Business Card in Program

*** BACKSTAGE - \$400**

- Name on Poster
- Display Ad in Program
 - *4 business card block
- Web Page Text Link

*** MUSIC FRIEND - \$10**

- Name in Program



Milford Borough
Music In The Park
2008

Sponsorship Commitment

I, _____ of _____
COMPANY

ADDRESS

TELEPHONE

E-MAIL

Commit to the following level of sponsorship, payable by April 20, 2008:

_____ **Headliner - \$500**

_____ **Music Fan - \$100**

_____ **Backstage - \$400**

_____ **Music Friend - \$10**

_____ **Front Row - \$200**

Please make checks payable to MILFORD BOROUGH

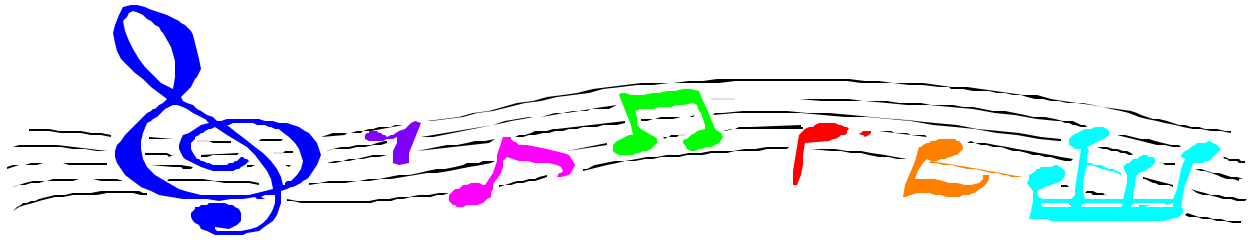
Sign

Print

Date

Please submit this commitment with payment by April 20, 2008 to:
Milford Borough
Attn. Steve Panicucci
111 W. Catherine St.
Milford, PA 18337

****IMPORTANT : Ad Copy Deadline is May 16, 2008. NO EXCEPTIONS**
Acceptable Copy Format: PDF, JPG, TIF.
E-mail Ad Copy to drumrider@yahoo.com
Please indicate "Music In The Park Ad" in subject line.



Milford Borough's
Music In The Park
2008

The "Music in the Park" Concert Series has featured performances by:

Big Bang Jazz Gang
Bobby Kyle
Brian McLoughlin Band
Celeste
Dan Engvaldsen
Eric Langberg & Bluestone
Gypsy Jazz Quartet
John Sonntag & The Tall Tones
Lawrence Amato
Rhett Tyler
Robert Kopec Quartet
Scott Weiss Band

In addition to Milford Borough past sponsors and supporters include:

Denise Palmeri & Joseph Logan,
First Horizon Home Loans
Fretta's Fine Italian Food
John Fisher CPA
Lattimore Construction
McGoey, Hauser & Edsall
Milford Chrysler
Milford Music Center and School of Music
Prime Time Meats
Roy B. Hull - Century 21
The Cabinet Shop
The New Muir House
Trading Closets
Vanatta Builders
Waterwheel Café, Bakery & Bar
Yetter Insurance Company